

Facet™ Trapping Columns



Facet™ Trapping Columns

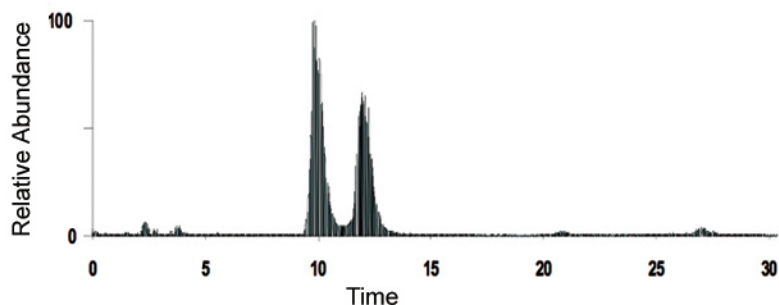
Protea's Facet™ Trapping Columns are produced from sample-friendly PEEK column bodies and packed with high quality Monitor reversed phase media (5µm beads) to insure reproducible chromatographic performance in solid phase extraction and LC-MS applications. The Facet cartridges have an internal volume of 3µL and are available in both C8 and C18 formats. The compact cartridge design permits easy connection into any LC plumbing scheme that utilizes standard 10-32 connections.



Our Facet Trapping Columns can be used for:

- LC-MS analysis of proteins.
- LC-MS/MS analysis of tryptic digests of proteins.
- Off-line solid phase extraction.

Column body construction: PEEK
Frit size/construction: 0.5µm titanium frits
Pressure rating: 100 bar (1450psi)
Column bore: 400µm ID
Internal volume: 3µL



Base peak chromatogram from the LC-MS separation of 2-pmol angiotensin and somatostatin using a Facet C8 Trapping Column and a 30-minute gradient with a flow rate of ~500-nL/min.

Catalog No.	Description	Unit	Price
FC-200	Facet C8 Trapping Column	ea.	150
FC-201	Facet C8 Trapping Column	5-pack	650
FC-210	Facet C18 Trapping Column	ea.	150
FC-211	Facet C18 Trapping Column	5-pack	650